

**Multi Tasking Non Technical Staff and Havaladar CBIC and CBN
Examination 2023**

Roll Number	
Candidate Name	
Venue Name	UNZIP TECHNOLOGY LLP.
Exam Date	14/09/2023
Exam Time	9:00 AM - 11:00 AM
Subject	MTS Non Tech Havaladar CBIC and CBN Examination 2023

Section : Numerical and Mathematical Ability

Q.1 A and B can do a piece of work in 30 days and 40 days, respectively. They began the work together but after a certain time, A leaves off and B completed the remaining work in 25 days. After how many days did A leave?

- Ans**
- ✓ 1. $6\frac{3}{7}$
 - ✗ 2. $5\frac{3}{7}$
 - ✗ 3. $5\frac{2}{7}$
 - ✗ 4. $6\frac{1}{7}$

Question ID : 264330155757

Option 1 ID : 264330610434

Option 2 ID : 264330610433

Option 3 ID : 264330610432

Option 4 ID : 264330610431

Status : Answered

Chosen Option : 1

Q.2 6 skilled workers can complete a work in 4 days. After three days 3 more skilled workers joined them. How many days will they now take to complete the remaining work?

- Ans**
- ✓ 1. $\frac{2}{3}$
 - ✗ 2. $\frac{1}{2}$
 - ✗ 3. $\frac{1}{3}$
 - ✗ 4. $\frac{3}{4}$

Question ID : 264330155760

Option 1 ID : 264330610446

Option 2 ID : 264330610444

Option 3 ID : 264330610443

Option 4 ID : 264330610445

Status : Answered

Chosen Option : 1

Q.3 In a class of boys and girls, the number of girls is twice the number of boys. If 20 more boys join the class, the ratio of girls and boys is 1 : 1. How many total students were there in the class initially?

- Ans
- 1. 60
 - 2. 75
 - 3. 45
 - 4. 90

Question ID : 264330153807

Option 1 ID : 264330602692

Option 2 ID : 264330602693

Option 3 ID : 264330602691

Option 4 ID : 264330602694

Status : Answered

Chosen Option : 1

Q.4 Atul sells goods to a customer at a profit of P%. If the cost price of the goods for the customer is ₹1,50,000 and Atul makes a profit of ₹30,000, then what is the value of P?

- Ans
- 1. 22
 - 2. 25
 - 3. 20
 - 4. 28

Question ID : 264330159631

Option 1 ID : 264330625884

Option 2 ID : 264330625885

Option 3 ID : 264330625883

Option 4 ID : 264330625886

Status : Answered

Chosen Option : 1

Q.5 Mixture 1 with a volume of 8 litres has 80% milk and Mixture 2 with a volume of 6 litres has 60% milk. Both the mixtures are mixed. Find the percentage of milk in the final mixture.

- Ans
- 1. $\frac{600}{7}$
 - 2. $\frac{500}{9}$
 - 3. $\frac{500}{7}$
 - 4. $\frac{800}{9}$

Question ID : 264330153801

Option 1 ID : 264330602668

Option 2 ID : 264330602667

Option 3 ID : 264330602669

Option 4 ID : 264330602670

Status : Answered

Chosen Option : 1

Q.6 Study the given table and answer the question that follows.

The table shows the number of students appeared and passed in different fields in a University.

Years	Medical		Engineering		Commerce		Management	
	Appeared	Passed	Appeared	Passed	Appeared	Passed	Appeared	Passed
2010	300	250	460	256	380	352	365	322
2011	345	320	440	365	401	354	314	314
2012	280	240	384	327	460	400	378	344
2013	310	230	390	290	430	392	387	353
2014	450	380	415	358	388	352	270	227
2015	380	286	486	456	366	315	290	257

What percentage of total students appearing in 2011, appeared in the medical field?

- Ans**
- ✓ 1. 23%
 - ✗ 2. 21%
 - ✗ 3. 20%
 - ✗ 4. 25%

Question ID : 264330156241

Option 1 ID : 264330612365

Option 2 ID : 264330612364

Option 3 ID : 264330612363

Option 4 ID : 264330612366

Status : Answered

Chosen Option : 4

Q.7 A thief is spotted by a policeman from a distance of 250 m. When the policeman starts chase, the thief also starts running. Assuming that the speed of the thief is 10 km/h and that of the policeman is 12.5 km/h. How far will have the thief run before he is caught?

- Ans**
- ✗ 1. 3 km
 - ✓ 2. 1 km
 - ✗ 3. 4 km
 - ✗ 4. 2 km

Question ID : 264330156347

Option 1 ID : 264330612789

Option 2 ID : 264330612787

Option 3 ID : 264330612790

Option 4 ID : 264330612788

Status : Answered

Chosen Option : 1

Q.8 Simplify: $6\frac{4}{5} \div \left[4\frac{1}{4} \div \left\{ 5\frac{1}{3} \times \frac{3}{8} + \left(3\frac{1}{2} + \frac{2}{3} \right) \times \frac{4}{5} \right\} \right]$

- Ans
- ✓ 1. $8\frac{8}{15}$
 - ✗ 2. $7\frac{8}{25}$
 - ✗ 3. $8\frac{8}{25}$
 - ✗ 4. $7\frac{8}{15}$

Question ID : 264330153752

Option 1 ID : 264330602473

Option 2 ID : 264330602472

Option 3 ID : 264330602471

Option 4 ID : 264330602474

Status : Answered

Chosen Option : 1

Q.9 Amit drove for 6 hours at a speed of 60 miles per hour and for 6 hours at 40 miles per hour. What was his average speed (in miles per hour) for the whole journey?

- Ans
- ✗ 1. 48
 - ✗ 2. 44
 - ✗ 3. 46
 - ✓ 4. 50

Question ID : 264330156215

Option 1 ID : 264330612261

Option 2 ID : 264330612259

Option 3 ID : 264330612260

Option 4 ID : 264330612262

Status : Answered

Chosen Option : 1

Q.10 A jewel was sold passing through 3 hands and on the whole, its price is raised by 80%. The first seller earns 20% profit and the second seller earns 25% profit, respectively. Find the percentage of profit earned by the third seller.

- Ans
- ✓ 1. 20%
 - ✗ 2. 10%
 - ✗ 3. 15%
 - ✗ 4. 5%

Question ID : 264330153839

Option 1 ID : 264330602821

Option 2 ID : 264330602822

Option 3 ID : 264330602819

Option 4 ID : 264330602820

Status : Answered

Chosen Option : 1

Q.11 A certain sum is invested at a simple interest rate of 12% per annum for a certain period of time. If the sum becomes four times the principal at the end of the period, what is the duration of the investment?

- Ans**
- 1. 22 years
 - 2. 24 years
 - 3. 25 years
 - 4. 20 years

Question ID : 264330156271
Option 1 ID : 264330612484
Option 2 ID : 264330612485
Option 3 ID : 264330612486
Option 4 ID : 264330612483
Status : Answered
Chosen Option : 1

Q.12 Mr. Kalra borrowed ₹1,35,000 to meet the expenses of his son's education. If the rate of interest is 12% per annum compounded annually, then how much amount will he have to make after 2 years and 3 months to settle the account?

- Ans**
- 1. ₹1,74,424.32
 - 2. ₹1,50,640.40
 - 3. ₹1,49,920.32
 - 4. ₹1,74,760

Question ID : 264330154131
Option 1 ID : 264330603988
Option 2 ID : 264330603990
Option 3 ID : 264330603989
Option 4 ID : 264330603987
Status : Answered
Chosen Option : 1

Q.13 The ratio of two numbers is 7 : 11 and their LCM is 462. What is the difference between these two numbers?

- Ans**
- 1. 24
 - 2. 26
 - 3. 30
 - 4. 28

Question ID : 264330155688
Option 1 ID : 264330610155
Option 2 ID : 264330610156
Option 3 ID : 264330610158
Option 4 ID : 264330610157
Status : Answered
Chosen Option : 1

Q.14 The diameter of the base of a cylindrical vessel is 30 cm and its height is 56 cm. Find its curved surface area (in cm^2).

- Ans**
- 1. 6080
 - 2. 6280
 - 3. 5280
 - 4. 5080

Question ID : 264330153863
Option 1 ID : 264330602916
Option 2 ID : 264330602918
Option 3 ID : 264330602917
Option 4 ID : 264330602915
Status : Answered
Chosen Option : 4

Q.15 The length, breadth and height of a cuboid are in the ratio of 6 : 4 : 3. If the total surface area of the cuboid is 972 cm^2 , what is the length (in cm) of the diagonal of the cuboid?

- Ans**
- 1. $5\sqrt{65}$
 - 2. $3\sqrt{61}$
 - 3. $3\sqrt{65}$
 - 4. $5\sqrt{61}$

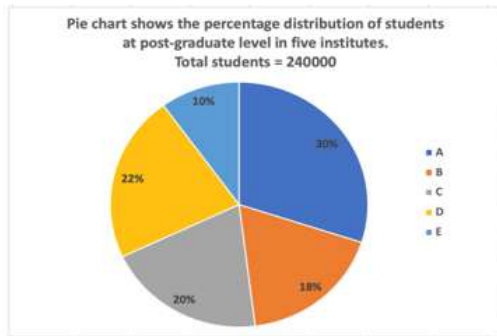
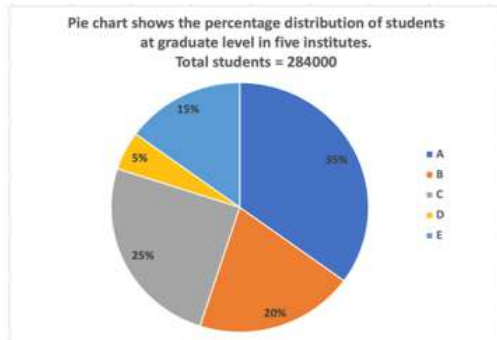
Question ID : 264330153792
Option 1 ID : 264330602631
Option 2 ID : 264330602633
Option 3 ID : 264330602632
Option 4 ID : 264330602634
Status : Answered
Chosen Option : 4

Q.16 Three numbers are in the ratio 1 : 2 : 3. By adding 5 to each of the numbers then the ratio changes to 2 : 3 : 4. The smallest number is:

- Ans**
- 1. 5
 - 2. 15
 - 3. 12
 - 4. 20

Question ID : 264330154049
Option 1 ID : 264330603662
Option 2 ID : 264330603660
Option 3 ID : 264330603661
Option 4 ID : 264330603659
Status : Answered
Chosen Option : 4

Q.17 The following pie-charts show the distribution of students of graduate and post-graduate levels in five different institutes in a city.



What is the total number of students from institutes A, C and E at the graduate level and from institutes B and D at the post-graduate level?

- Ans**
- 1. 390000
 - 2. 300900
 - 3. 300090
 - 4. 309000

Question ID : 264330153786

Option 1 ID : 264330602607

Option 2 ID : 264330602609

Option 3 ID : 264330602608

Option 4 ID : 264330602610

Status : Answered

Chosen Option : 1

Q.18 The distance between two towns is covered in 9 hours at a speed of 60 kmph. By how much should the speed (in km/h) be increased so that 1 hour of the travelling time is saved?

- Ans**
- 1. 7.5
 - 2. 10
 - 3. 15
 - 4. 12.5

Question ID : 264330156489

Option 1 ID : 264330613343

Option 2 ID : 264330613345

Option 3 ID : 264330613344

Option 4 ID : 264330613346

Status : Answered

Chosen Option : 4

Q.19 A man decided to cover 7.5 km in 72 minutes. He decided to cover two thirds of the distance at 5 km/h and the remaining at some different speed. Find the speed after two third distance has been covered.

- Ans**
- 1. 14.3 km/h
 - 2. 15.5 km/h
 - 3. 12.5 km/h
 - 4. 10 km/h

Question ID : 264330156361
Option 1 ID : 264330612845
Option 2 ID : 264330612846
Option 3 ID : 264330612844
Option 4 ID : 264330612843
Status : Answered
Chosen Option : 1

Q.20 Rickey spends 35% of his salary on groceries, 15% on loans, 14% on electricity bills and 6% on miscellaneous. If his savings at the end of a month are ₹2,400, then his salary per month (in ₹) is:

- Ans**
- 1. 8,000
 - 2. 5,828
 - 3. 4,000
 - 4. 6,000

Question ID : 264330156431
Option 1 ID : 264330613116
Option 2 ID : 264330613117
Option 3 ID : 264330613118
Option 4 ID : 264330613115
Status : Answered
Chosen Option : 2

Section : Reasoning Ability and Problem Solving

Q.1 Read the given statements and conclusions carefully. You have to take the given statements to be true even if they seem to be at variance from commonly known facts. You have to decide which conclusion/s logically follow/s from the given statements.

Statements: All trucks are bikes. All bikes are carts. Some carts are pens.

Conclusion I: Some trucks are carts.

Conclusion II: No bikes are pens.

- Ans**
- 1. Only conclusion (II) is follow.
 - 2. Both conclusions (I) and (II) are follow.
 - 3. Neither conclusion (I) nor (II) is follow.
 - 4. Only conclusion (I) is follow.

Question ID : 264330155922
Option 1 ID : 264330611092
Option 2 ID : 264330611094
Option 3 ID : 264330611093
Option 4 ID : 264330611091
Status : Answered
Chosen Option : 1

Q.2 What will come in the place of '?' in the following equation, if '+' and '-' are interchanged and '×' and '÷' are interchanged?

$$357 \times 7 + 19 \div 2 - 38 = ?$$

- Ans**
- ✓ 1. 51
 - ✗ 2. 71
 - ✗ 3. 61
 - ✗ 4. 41

Question ID : 264330155679

Option 1 ID : 264330610119

Option 2 ID : 264330610121

Option 3 ID : 264330610120

Option 4 ID : 264330610122

Status : Answered

Chosen Option : 1

Q.3 RN 12 is related to PL 16 in a certain way. In the same way, EJ 17 is related to CH 21. To which of the following is FL 15 related to following the same logic?

- Ans**
- ✓ 1. DJ 19
 - ✗ 2. HN 18
 - ✗ 3. CI 20
 - ✗ 4. DK 19

Question ID : 264330151670

Option 1 ID : 264330594308

Option 2 ID : 264330594309

Option 3 ID : 264330594310

Option 4 ID : 264330594307

Status : Answered

Chosen Option : 1

Adda247

Q.4 Which figure should replace the question mark (?) if the following figure series were to be continued?

X	9	B	☆	T	L	9	X	
	☆		L		X		B	?
B	L	T	X	T	9	9	B	☆

Ans

✗ 1.

L		B
	T	
☆	X	9

✗ 2.

X		B
	9	
L	T	☆

✓ 3.

☆		B
	T	
L	9	X

✗ 4.

L		T
	☆	
X	B	9

Question ID : 264330154744

Option 1 ID : 264330606442

Option 2 ID : 264330606439

Option 3 ID : 264330606440

Option 4 ID : 264330606441

Status : Answered

Chosen Option : 4

Q.5 Select the combination of letters that when sequentially placed in the blanks of the given series will make it logically complete.

PYJ_ S_LM _YNM YY_M B_RM

Ans ✗ 1. PMGHY

✗ 2. HAPPY

✗ 3. MHAPV

✓ 4. MYVPY

Question ID : 264330156317

Option 1 ID : 264330612670

Option 2 ID : 264330612667

Option 3 ID : 264330612669

Option 4 ID : 264330612668

Status : Answered

Chosen Option : 4

Q.6 What should come in place of '?' in the given series?

3 21 111 561 2811 ?

- Ans
- 1. 12952
 - 2. 13468
 - 3. 14061
 - 4. 12786

Question ID : 264330151471
Option 1 ID : 264330593512
Option 2 ID : 264330593513
Option 3 ID : 264330593514
Option 4 ID : 264330593511
Status : Answered
Chosen Option : 1

Q.7 Select the combination of letters that when sequentially placed in the blanks of the given series, will complete the series.

_ FFEF _ _ FF _ F _

- Ans
- 1. EEEFE
 - 2. EFFE
 - 3. EFEEF
 - 4. EFFEE

Question ID : 264330151654
Option 1 ID : 264330594244
Option 2 ID : 264330594246
Option 3 ID : 264330594243
Option 4 ID : 264330594245
Status : Answered
Chosen Option : 3

Q.8 Read the given statements and conclusions carefully. You have to take the given statements to be true even if they seem to be at variance from commonly known facts. You have to decide which conclusion/s logically follow/s from the given statements.

Statements: Some chargers are metal. All metal are hard. Some hard are stools.

Conclusion I: All chargers are metal.

Conclusion II: Some stools are hard.

- Ans
- 1. Both conclusions (I) and (II) are follow.
 - 2. Neither conclusion (I) nor (II) is follow.
 - 3. Only conclusion (I) is follow.
 - 4. Only conclusion (II) is follow.

Question ID : 264330155902
Option 1 ID : 264330611014
Option 2 ID : 264330611013
Option 3 ID : 264330611011
Option 4 ID : 264330611012
Status : Answered
Chosen Option : 4

Q.9 Kiran, Pihu, Siya, Leena, Reena and Jiya are sitting around a circular table facing the centre.
Kiran sits 3rd to the right of Pihu. Siya sits 2nd to the right of Kiran. Leena sits 3rd to the left of Siya. Reena is an immediate neighbour of Leena.
Who sits to the immediate left of Jiya?

- Ans**
- 1. Leena
 - 2. Siya
 - 3. Pihu
 - 4. Kiran

Question ID : **264330155652**
Option 1 ID : **264330610014**
Option 2 ID : **264330610012**
Option 3 ID : **264330610013**
Option 4 ID : **264330610011**
Status : **Answered**
Chosen Option : **4**

Q.10 If 'I' stands for '+', 'J' stands for '×', 'K' stands for '÷' and 'L' stands for '-', what will come in place of the question mark (?) in the following equation?
(95 K 19) J 7 L 15 I (10 J 4) = ?

- Ans**
- 1. 50
 - 2. 40
 - 3. 70
 - 4. 60

Question ID : **264330151795**
Option 1 ID : **264330594809**
Option 2 ID : **264330594808**
Option 3 ID : **264330594810**
Option 4 ID : **264330594807**
Status : **Answered**
Chosen Option : **4**

Adda247

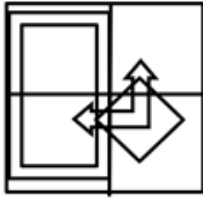
Q.11 Select the option figure in which the given figure (X) is embedded as its part (rotation is NOT allowed).



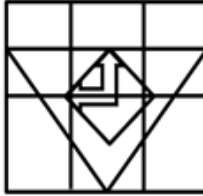
(X)

Ans

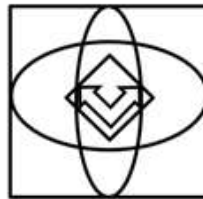
✗ 1.



✓ 2.



✗ 3.



✗ 4.



Question ID : 264330151732

Option 1 ID : 264330594556

Option 2 ID : 264330594557

Option 3 ID : 264330594558

Option 4 ID : 264330594555

Status : Answered

Chosen Option : 2

Q.12 428 is related to 317 following a certain logic. Following the same logic, 285 is related to 174. To which of the following is 597 related to, following the same logic?

Ans ✗ 1. 386

✗ 2. 368

✗ 3. 468

✓ 4. 486

Question ID : 264330151597

Option 1 ID : 264330594015

Option 2 ID : 264330594016

Option 3 ID : 264330594017

Option 4 ID : 264330594018

Status : Answered

Chosen Option : 4

Q.13 Select the set in which the numbers are related in the same way as are the numbers of the following sets.
(NOTE: Operations should be performed on the whole numbers, without breaking down the numbers into its constituent digits. E.g. 13 – Operations on 13 such as adding / subtracting /multiplying etc. to 13 can be performed. Breaking down 13 into 1 and 3 and then performing mathematical operations on 1 and 3 is not allowed)
(14, 42, 7)
(12, 34, 5)

- Ans** ✓ 1. 43, 144, 29
✗ 2. 17, 102, 5
✗ 3. 25, 131, 2
✗ 4. 36, 702, 2

Question ID : 264330151612
Option 1 ID : 264330594078
Option 2 ID : 264330594077
Option 3 ID : 264330594075
Option 4 ID : 264330594076
Status : Answered
Chosen Option : 2

Q.14 If 5th May 2010 is Wednesday, then what will be the day of the week on 5th June 2022?

- Ans** ✗ 1. Tuesday
✗ 2. Monday
✗ 3. Wednesday
✓ 4. Sunday

Question ID : 264330154338
Option 1 ID : 264330604817
Option 2 ID : 264330604816
Option 3 ID : 264330604818
Option 4 ID : 264330604815
Status : Answered
Chosen Option : 2

Q.15 What should come in place of the question mark (?) in the given series based on the English alphabetical order?
YFD, VJA, SNX, PRU, ?

- Ans** ✗ 1. MXS
✓ 2. MVR
✗ 3. NWS
✗ 4. NWR

Question ID : 264330156301
Option 1 ID : 264330612606
Option 2 ID : 264330612605
Option 3 ID : 264330612604
Option 4 ID : 264330612603
Status : Answered
Chosen Option : 2

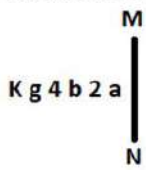
Q.16 What should come in place of ? in the given series?

26 37 59 92 136 ?

- Ans
- 1. 192
 - 2. 191
 - 3. 190
 - 4. 193

Question ID : 264330151555
Option 1 ID : 264330593849
Option 2 ID : 264330593848
Option 3 ID : 264330593847
Option 4 ID : 264330593850
Status : Answered
Chosen Option : 2

Q.17 Select the correct mirror image of the given figure when the mirror is placed at MN as shown below.



- Ans
- 1. a 2 b 4 g K
 - 2. a 2 b 4 g K
 - 3. a 2 b 4 g K
 - 4. a 2 b 4 g K

Question ID : 264330151518
Option 1 ID : 264330593699
Option 2 ID : 264330593702
Option 3 ID : 264330593701
Option 4 ID : 264330593700
Status : Answered
Chosen Option : 4

Q.18 What should come in place of '?' in the given series?

14 85 511 3067 18403 ?

- Ans
- 1. 110279
 - 2. 110581
 - 3. 110119
 - 4. 110419

Question ID : 264330151486
Option 1 ID : 264330593572
Option 2 ID : 264330593574
Option 3 ID : 264330593571
Option 4 ID : 264330593573
Status : Answered
Chosen Option : 4

Q.19 In a certain code language, 'NAIL' is coded as '2637' and 'LANE' is coded as '3278'. What is the code for 'E' in the given code language?

- Ans**
- 1. 8
 - 2. 7
 - 3. 2
 - 4. 3

Question ID : 264330151699
Option 1 ID : 264330594424
Option 2 ID : 264330594423
Option 3 ID : 264330594426
Option 4 ID : 264330594425
Status : Answered
Chosen Option : 1

Q.20 In a certain code language, 'MENTOR' is coded as 'EMOUPS' and 'OCTAGON' is coded as 'COUBHPO'. What is the code for 'PENCIL' in the given code language?

- Ans**
- 1. EPLICN
 - 2. LINCENP
 - 3. PLICNE
 - 4. EPODJM

Question ID : 264330155828
Option 1 ID : 264330610717
Option 2 ID : 264330610715
Option 3 ID : 264330610718
Option 4 ID : 264330610716
Status : Answered
Chosen Option : 4

Section : General Awareness

Q.1 Identify the vector quantity among these listed physical quantities?

- Ans**
- 1. Energy
 - 2. Mass
 - 3. Density
 - 4. Gravitational Intensity

Question ID : 264330157782
Option 1 ID : 264330618490
Option 2 ID : 264330618488
Option 3 ID : 264330618487
Option 4 ID : 264330618489
Status : Answered
Chosen Option : 4

Q.2 'The Palace of Illusions', a rendition of the Hindu epic 'Mahabharata', was written by which of the following novelists?

- Ans 1. Chitra Banerjee Divakaruni
 2. Pratibha Ray
 3. Devi Yesodharan
 4. Indu Sundareshan

Question ID : 264330161761
Option 1 ID : 264330634374
Option 2 ID : 264330634371
Option 3 ID : 264330634373
Option 4 ID : 264330634372
Status : Answered
Chosen Option : 1

Q.3 G Krishnakumar was appointed chairman of which of the following in 2023?

- Ans 1. Oil and Natural Gas Corporation Limited
 2. Indian Oil Corporation Limited
 3. Bharat Petroleum Corporation Limited
 4. Hindustan Petroleum Corporation Limited

Question ID : 264330158349
Option 1 ID : 264330620755
Option 2 ID : 264330620758
Option 3 ID : 264330620756
Option 4 ID : 264330620757
Status : Answered
Chosen Option : 1

Q.4 _____ was the first Indian woman to write an autobiography and also the first to do so in Bengali in her book titled 'Amar Jiban', which was published in 1876.

- Ans 1. Rassundari Devi
 2. Manikuntala Sen
 3. Sarala Devi Chaudhurani
 4. Santisudha Ghosh

Question ID : 264330161927
Option 1 ID : 264330635037
Option 2 ID : 264330635038
Option 3 ID : 264330635035
Option 4 ID : 264330635036
Status : Answered
Chosen Option : 3

Q.5 Where is the Vivekanand Rock Memorial situated?

- Ans 1. Port Blair
 2. Vishakhapatnam
 3. Kanyakumari
 4. Chennai

Question ID : 264330160776
Option 1 ID : 264330630437
Option 2 ID : 264330630438
Option 3 ID : 264330630436
Option 4 ID : 264330630435
Status : Answered
Chosen Option : 3

Q.6 Under which Act was the rule of British Crown established over India?

- Ans** 1. Government of India Act 1833
 2. Charter Act of 1813
 3. Regulating Act of 1773
 4. Government of India Act 1858

Question ID : 264330162319
Option 1 ID : 264330636605
Option 2 ID : 264330636603
Option 3 ID : 264330636604
Option 4 ID : 264330636606
Status : Answered
Chosen Option : 2

Q.7 The Kolar region of Karnataka is famous for which mineral from the following?

- Ans** 1. Coal
 2. Gold
 3. Petroleum
 4. Copper

Question ID : 264330161523
Option 1 ID : 264330633420
Option 2 ID : 264330633421
Option 3 ID : 264330633422
Option 4 ID : 264330633419
Status : Marked For Review
Chosen Option : 2

Q.8 Match the following performances of Indian naatya, which were presented by the means of variegated components:

- 1) Angika (a) costumes and make-up
2) Vachika (b) depiction of mental or psychological states
3) Aharya (c) spoken words
4) Sattvika (d) gestures and other bodily movements

- Ans** 1. 1-c, 2-b, 3-d, 4-a
 2. 1-a, 2-b, 3-d, 4-c
 3. 1-d, 2-c, 3-a, 4-b
 4. 1-c, 2-a, 3-b, 4-d

Question ID : 264330159048
Option 1 ID : 264330623551
Option 2 ID : 264330623553
Option 3 ID : 264330623554
Option 4 ID : 264330623552
Status : Answered
Chosen Option : 3

Q.9 In Fencing, a contest between the two fencers is known as:

- Ans 1. bout
 2. remise
 3. parry
 4. riposte

Question ID : 264330161162
Option 1 ID : 264330631982
Option 2 ID : 264330631981
Option 3 ID : 264330631979
Option 4 ID : 264330631980
Status : Answered
Chosen Option : 1

Q.10 In which year has the Government of India instituted Arjuna Award to recognise outstanding achievement in national sports events?

- Ans 1. 1961
 2. 1963
 3. 1964
 4. 1962

Question ID : 264330158236
Option 1 ID : 264330620304
Option 2 ID : 264330620305
Option 3 ID : 264330620306
Option 4 ID : 264330620303
Status : Not Answered
Chosen Option : --

Q.11 'Atla Taddi', a festival celebrated by married and unmarried women alike to seek the blessings of Devi Gauri for a long and happy married life and a suitable groom, respectively, is celebrated in _____.

- Ans 1. Andhra Pradesh
 2. Kerala
 3. Chhattisgarh
 4. Odisha

Question ID : 264330160817
Option 1 ID : 264330630599
Option 2 ID : 264330630600
Option 3 ID : 264330630601
Option 4 ID : 264330630602
Status : Not Answered
Chosen Option : --

Q.12 PT Usha was elected as the president of which association in December 2022?

- Ans 1. Indian Olympic Association
 2. Haryana Olympic Association
 3. National Rifle Association of India
 4. Badminton Association of India

Question ID : 264330158370
Option 1 ID : 264330620842
Option 2 ID : 264330620841
Option 3 ID : 264330620840
Option 4 ID : 264330620839
Status : Answered
Chosen Option : 1

Q.13 नीति आयोग (NITI Aayog) की पहली बहुआयामी गरीबी सूचकांक (MPI) 2021 रिपोर्ट के अनुसार, भारत में कौन-सा राज्य पहले स्थान पर है?

- Ans
- 1. झारखंड
 - 2. छत्तीसगढ़
 - 3. बिहार
 - 4. उत्तर प्रदेश

Question ID : 264330166019
Option 1 ID : 264330651152
Option 2 ID : 264330651154
Option 3 ID : 264330651151
Option 4 ID : 264330651153
Status : Answered
Chosen Option : 1

Q.14 What is the full form of UPSC?

- Ans
- 1. United Public Security Commission
 - 2. United Power & Security Commission
 - 3. Union Private Service Committee
 - 4. Union Public Service Commission

Question ID : 264330159909
Option 1 ID : 264330626983
Option 2 ID : 264330626986
Option 3 ID : 264330626984
Option 4 ID : 264330626985
Status : Answered
Chosen Option : 4

Q.15 To which of the state does Sattriya classical dance belong?

- Ans
- 1. Maharashtra
 - 2. Madhya Pradesh
 - 3. Karnataka
 - 4. Assam

Question ID : 264330159051
Option 1 ID : 264330623565
Option 2 ID : 264330623564
Option 3 ID : 264330623563
Option 4 ID : 264330623566
Status : Answered
Chosen Option : 1

Q.16 Who among the following was a renowned dancer and the first person from Odisha to receive 'Padma Vibhushan' in 2000?

- Ans**
- 1. Prabhat Swain
 - 2. Gangadhar Pradhan
 - 3. Mayadhar Raut
 - 4. Kelucharan Mohapatra

Question ID : 264330155478
Option 1 ID : 264330609318
Option 2 ID : 264330609317
Option 3 ID : 264330609315
Option 4 ID : 264330609316
Status : Not Answered
Chosen Option : --

Q.17 Which musical instrument does N Rajam play?

- Ans**
- 1. Sitar
 - 2. Violin
 - 3. Santoor
 - 4. Guitar

Question ID : 264330155465
Option 1 ID : 264330609263
Option 2 ID : 264330609264
Option 3 ID : 264330609265
Option 4 ID : 264330609266
Status : Marked For Review
Chosen Option : 4

Q.18 Which of the following is NOT a function of money?

- Ans**
- 1. Barter system
 - 2. Store of value
 - 3. Unit of account
 - 4. Medium of exchange

Question ID : 264330157298
Option 1 ID : 264330616558
Option 2 ID : 264330616556
Option 3 ID : 264330616557
Option 4 ID : 264330616555
Status : Answered
Chosen Option : 1

Q.19 According to the Census of India 2011, what was the population density recorded in Bihar?

- Ans 1. 1106 persons/km²
 2. 980 persons/km²
 3. 1050 persons/km²
 4. 1320 persons/km²

Question ID : 264330161551
Option 1 ID : 264330633532
Option 2 ID : 264330633534
Option 3 ID : 264330633533
Option 4 ID : 264330633531
Status : Not Answered
Chosen Option : --

Q.20 Carbohydrates are utilised by the human body in the form of:

- Ans 1. glucose
 2. nucleotides
 3. fibre
 4. amino acids

Question ID : 264330157808
Option 1 ID : 264330618592
Option 2 ID : 264330618594
Option 3 ID : 264330618591
Option 4 ID : 264330618593
Status : Answered
Chosen Option : 1

Q.21 Which Indian musician is associated with the tabla?

- Ans 1. Ustad Bismillah Khan
 2. Zakir Hussain
 3. Pandit Ravishankar
 4. Ilayaraja

Question ID : 264330160976
Option 1 ID : 264330631235
Option 2 ID : 264330631236
Option 3 ID : 264330631237
Option 4 ID : 264330631238
Status : Answered
Chosen Option : 2

Q.22 On whose advice did Gandhiji spend a year travelling around British India to know the people of India?

- Ans
- 1. Krishnashankar Pandya
 - 2. Mohammad Ali Jinnah
 - 3. Shrimad Rajchandra
 - 4. Gopal Krishna Gokhale

Question ID : 264330161744
Option 1 ID : 264330634306
Option 2 ID : 264330634304
Option 3 ID : 264330634305
Option 4 ID : 264330634303
Status : Answered
Chosen Option : 4

Q.23 कौन-सा घाटा सरकार की ऋण-ग्रहण आवश्यकताओं को दर्शाता है?

- Ans
- 1. पूंजीगत घाटा
 - 2. राजस्व घाटा
 - 3. प्राथमिक घाटा
 - 4. राजकोषीय घाटा

Question ID : 264330161582
Option 1 ID : 264330633657
Option 2 ID : 264330633656
Option 3 ID : 264330633655
Option 4 ID : 264330633658
Status : Answered
Chosen Option : 4

Q.24 Which of the following fundamental duties was added to the Indian Constitution by the 86th Constitutional Amendment Act, 2002?

- Ans
- 1. To abide by the Constitution and respect its ideals and institutions, the National Flag and the National Anthem
 - 2. To protect and to improve the natural environment including forests, lakes, rivers and wildlife, and to have compassion for living creatures
 - 3. To provide opportunities for education to his/her child or, as the case may be, ward between the age of six and fourteen years
 - 4. To cherish and follow the noble ideals which inspired our national struggle for freedom

Question ID : 264330162247
Option 1 ID : 264330636315
Option 2 ID : 264330636318
Option 3 ID : 264330636317
Option 4 ID : 264330636316
Status : Answered
Chosen Option : 1

Q.25 शैल कायांतरण के दौरान निम्नलिखित में से कौन-सी चट्टानें बनती हैं?

Ans

- 1. स्लेट (Slate)
- 2. पिंडशीला (Conglomerate)
- 3. बालुकाश्म (Sandstone)
- 4. बेसाल्ट (Basalt)

Question ID : 264330157829

Option 1 ID : 264330618675

Option 2 ID : 264330618678

Option 3 ID : 264330618677

Option 4 ID : 264330618676

Status : Not Answered

Chosen Option : --

Section : English Language and Comprehension

Q.1 Select the most appropriate option to fill in the blank.
Dr. APJ Abdul Kalam was a great man with a high level of _____.

Ans

- 1. intelligent humour
- 2. wise boredom
- 3. intellect
- 4. clever fatigue

Question ID : 264330153508

Option 1 ID : 264330601543

Option 2 ID : 264330601545

Option 3 ID : 264330601544

Option 4 ID : 264330601546

Status : Answered

Chosen Option : 3

Q.2 The following sentence contains some errors. Select the option that correctly rectifies the error.
The forces that generate conditions conducive to crime and riots are stronger in urban communities than in rural areas.

Ans

- 1. The forces that generate conditions conducive to crime and riots are stronger in urban communities than in rural areas.
- 2. The forces that generate conditions conducive to crime and riots are stronger in urban communities than in rural areas.
- 3. The forces that generate conditions conducive to crime and riots are stronger in urban communities than in rural areas.
- 4. The forces that generate conditions conducive to crime and riots are stronger in urban communities than in rural areas.

Question ID : 264330152693

Option 1 ID : 264330598375

Option 2 ID : 264330598378

Option 3 ID : 264330598377

Option 4 ID : 264330598376

Status : Answered

Chosen Option : 3

Q.3 Select the most appropriate option that can substitute the underlined segment in the given sentence.

I found my teacher's points casual and informal in the group discussion.

- Ans
- 1. flesh and blood
 - 2. free and easy
 - 3. foot the bill
 - 4. fair and square

Question ID : 264330144124
Option 1 ID : 264330564761
Option 2 ID : 264330564760
Option 3 ID : 264330564759
Option 4 ID : 264330564762
Status : Answered
Chosen Option : 4

Q.4 Select the word which means the same as the group of words given.
One who is all powerful.

- Ans
- 1. Omnipresent
 - 2. Omnipotent
 - 3. Optimist
 - 4. Omniscient

Question ID : 264330152571
Option 1 ID : 264330597887
Option 2 ID : 264330597888
Option 3 ID : 264330597890
Option 4 ID : 264330597889
Status : Answered
Chosen Option : 2

Q.5 Select the most appropriate option that can substitute the underlined segment in the given sentence.

Ramesh is owning a beautiful house in Noida.

- Ans
- 1. did owned
 - 2. owns
 - 3. has owning
 - 4. was owned

Question ID : 264330152710
Option 1 ID : 264330598442
Option 2 ID : 264330598439
Option 3 ID : 264330598441
Option 4 ID : 264330598440
Status : Answered
Chosen Option : 2

Q.6 Parts of the following sentence have been given as options. Select the option that contains an error.
When Nisha will have finished her task?

- Ans
- 1. have
 - 2. When Nisha will
 - 3. finished
 - 4. her task

Question ID : 264330152817
Option 1 ID : 264330598860
Option 2 ID : 264330598859
Option 3 ID : 264330598861
Option 4 ID : 264330598862
Status : Answered
Chosen Option : 1

Q.7 Select the most appropriate option that can substitute the underlined segment in the given sentence.

He push the bushes aside and went a little farther.

- Ans
- 1. pushed with bush
 - 2. pushing the bush
 - 3. pushes in bush
 - 4. pushed the bushes

Question ID : 264330153471
Option 1 ID : 264330601399
Option 2 ID : 264330601400
Option 3 ID : 264330601401
Option 4 ID : 264330601402
Status : Answered
Chosen Option : 4

Q.8 Select the option that can be used as a one-word substitute for the given group of words.

Copying someone else's work and trying to submit it as your own

- Ans
- 1. Plagiarism
 - 2. Polygamy
 - 3. Preamble
 - 4. Extempore

Question ID : 264330152771
Option 1 ID : 264330598676
Option 2 ID : 264330598678
Option 3 ID : 264330598677
Option 4 ID : 264330598675
Status : Answered
Chosen Option : 1

Q.9 Select the most appropriate meaning of the given idiom.
Beauty of it

- Ans
- 1. Make things worse
 - 2. Cause for dispute
 - 3. Quite ordinary
 - 4. Good points

Question ID : 264330151830
Option 1 ID : 264330594950
Option 2 ID : 264330594948
Option 3 ID : 264330594947
Option 4 ID : 264330594949
Status : Answered
Chosen Option : 4

Q.10 Select the most appropriate synonym of the underlined word.
The girl was manacled and locked in the room.

- Ans
- 1. unfastened
 - 2. liberated
 - 3. fettered
 - 4. unbinded

Question ID : 264330153521
Option 1 ID : 264330601597
Option 2 ID : 264330601595
Option 3 ID : 264330601598
Option 4 ID : 264330601596
Status : Answered
Chosen Option : 3

Q.11 Select the most appropriate ANTONYM of the underlined word.
Addiction of drugs proved detrimental for his health.

- Ans
- 1. Impartial
 - 2. Potential
 - 3. Beneficial
 - 4. Differential

Question ID : 264330151819
Option 1 ID : 264330594906
Option 2 ID : 264330594905
Option 3 ID : 264330594904
Option 4 ID : 264330594903
Status : Answered
Chosen Option : 3

Q.12 Select the most appropriate synonym of the given word.
Plunge

- Ans 1. Transgress
 2. Dive
 3. Rush
 4. Fly

Question ID : 264330151877
Option 1 ID : 264330595129
Option 2 ID : 264330595128
Option 3 ID : 264330595130
Option 4 ID : 264330595127
Status : Answered
Chosen Option : 1

Q.13 Select the INCORRECTLY spelt word.

- Ans 1. Tomatos
 2. Weather
 3. Vehicle
 4. Professor

Question ID : 264330153153
Option 1 ID : 264330600172
Option 2 ID : 264330600174
Option 3 ID : 264330600171
Option 4 ID : 264330600173
Status : Answered
Chosen Option : 1

Q.14 Select the most appropriate option that can rectify the underlined segment in the given sentence. If there is no need to rectify it, select 'no rectification needed'.

I used a variety of sources to find the more cheap flight.

- Ans 1. no rectification needed
 2. cheaper
 3. cheapest
 4. cheap

Question ID : 264330153462
Option 1 ID : 264330601366
Option 2 ID : 264330601363
Option 3 ID : 264330601365
Option 4 ID : 264330601364
Status : Answered
Chosen Option : 3

Q.15 Select the **INCORRECTLY** spelt word in the given sentence.
All the members of my family are planning to visit Jammu and Kashmir this Novembur.

- Ans** 1. Novembur
 2. Planning
 3. Visit
 4. Members

Question ID : 264330153300
Option 1 ID : 264330600755
Option 2 ID : 264330600756
Option 3 ID : 264330600758
Option 4 ID : 264330600757
Status : Answered
Chosen Option : 1

Q.16 Parts of the following sentence have been given as options. Select the option that contains an error.
Ravi will go to the England.

- Ans** 1. the England
 2. will
 3. Ravi
 4. go to

Question ID : 264330152792
Option 1 ID : 264330598762
Option 2 ID : 264330598760
Option 3 ID : 264330598759
Option 4 ID : 264330598761
Status : Marked For Review
Chosen Option : 4

Q.17 Select the most appropriate response in the given situation of the eve of a battle to fill in the blank.

The commander: "Honourable Emperor, all the troops have lined up for the battle and are awaiting your orders." Emperor Chandragupta Maurya:
"_____."

- Ans** 1. We will march at dawn.
 2. You should learn how to talk to an emperor.
 3. We will be playing cards.
 4. We are ready for the pilgrimage.

Question ID : 264330152642
Option 1 ID : 264330598173
Option 2 ID : 264330598174
Option 3 ID : 264330598171
Option 4 ID : 264330598172
Status : Answered
Chosen Option : 1

Q.18 Select the most appropriate meaning of the underlined idiom.
We prefer going to movies once in a blue moon.

- Ans**
- 1. Very rarely
 - 2. Very amazingly
 - 3. Very diligently
 - 4. Very often

Question ID : 264330151833
Option 1 ID : 264330594960
Option 2 ID : 264330594962
Option 3 ID : 264330594961
Option 4 ID : 264330594959
Status : Marked For Review
Chosen Option : 1

Q.19 The following sentence has been split into four segments. Identify the segment that contains an error.
My father told me / that in his childhood / he was walking / to school every day.

- Ans**
- 1. he was walking
 - 2. that in his childhood
 - 3. My father told me
 - 4. to school every day

Question ID : 264330155325
Option 1 ID : 264330608741
Option 2 ID : 264330608740
Option 3 ID : 264330608739
Option 4 ID : 264330608742
Status : Answered
Chosen Option : 1

Q.20 Select the most appropriate meaning of the underlined idiom in the given sentence.

Today's question paper felt like a cakewalk.

- Ans**
- 1. Very sweet
 - 2. Very tasty
 - 3. Very easy
 - 4. Very difficult

Question ID : 264330152878
Option 1 ID : 264330599106
Option 2 ID : 264330599103
Option 3 ID : 264330599105
Option 4 ID : 264330599104
Status : Answered
Chosen Option : 3

Comprehension:

In the following passage some words have been deleted. Fill in the blanks with the help of the alternatives given. Select the most appropriate option for each number.

Modern football (1)_____in Britain in the 19th century. Since before medieval times, 'folk football' games had been played in towns and villages according to local customs and with a (2)_____of rules. Industrialisation and (3)_____, which reduced the amount of leisure time and space available to the working class, combined with a history of legal prohibitions against particularly (4)_____and destructive forms of folk football to undermine the game's status from the early 19th century onward. However, football was taken up as a winter game between residence houses at public (independent) schools such as Winchester, Charterhouse and Eton. Each school had its own rules; some allowed limited handling of the ball and others did not. The (5)_____in rules made it difficult for public schoolboys entering university to continue playing except with former schoolmates.

SubQuestion No : 21

Q.21 Select the most appropriate option to fill in blank no. 1.

- Ans
- 1. terminated
 - 2. culminated
 - 3. originated
 - 4. fragmented

Question ID : 264330153430

Option 1 ID : 264330601245

Option 2 ID : 264330601244

Option 3 ID : 264330601246

Option 4 ID : 264330601243

Status : Answered

Chosen Option : 3

Comprehension:

In the following passage some words have been deleted. Fill in the blanks with the help of the alternatives given. Select the most appropriate option for each number.

Modern football (1)_____in Britain in the 19th century. Since before medieval times, 'folk football' games had been played in towns and villages according to local customs and with a (2)_____of rules. Industrialisation and (3)_____, which reduced the amount of leisure time and space available to the working class, combined with a history of legal prohibitions against particularly (4)_____and destructive forms of folk football to undermine the game's status from the early 19th century onward. However, football was taken up as a winter game between residence houses at public (independent) schools such as Winchester, Charterhouse and Eton. Each school had its own rules; some allowed limited handling of the ball and others did not. The (5)_____in rules made it difficult for public schoolboys entering university to continue playing except with former schoolmates.

SubQuestion No : 22

Q.22 Select the most appropriate option to fill in blank no. 2.

- Ans
- 1. optimum
 - 2. variance
 - 3. minimum
 - 4. maximum

Question ID : 264330153431

Option 1 ID : 264330601249

Option 2 ID : 264330601250

Option 3 ID : 264330601248

Option 4 ID : 264330601247

Status : Answered

Chosen Option : 2

Comprehension:

In the following passage some words have been deleted. Fill in the blanks with the help of the alternatives given. Select the most appropriate option for each number.

Modern football (1)_____in Britain in the 19th century. Since before medieval times, 'folk football' games had been played in towns and villages according to local customs and with a (2)_____of rules. Industrialisation and (3)_____, which reduced the amount of leisure time and space available to the working class, combined with a history of legal prohibitions against particularly (4)_____and destructive forms of folk football to undermine the game's status from the early 19th century onward. However, football was taken up as a winter game between residence houses at public (independent) schools such as Winchester, Charterhouse and Eton. Each school had its own rules; some allowed limited handling of the ball and others did not. The (5)_____in rules made it difficult for public schoolboys entering university to continue playing except with former schoolmates.

SubQuestion No : 23

Q.23 Select the most appropriate option to fill in blank no. 3.

- Ans 1. normalisation
 2. urbanisation
 3. standardisation
 4. implementation

Question ID : 264330153432

Option 1 ID : 264330601252

Option 2 ID : 264330601251

Option 3 ID : 264330601253

Option 4 ID : 264330601254

Status : Answered

Chosen Option : 2

Comprehension:

In the following passage some words have been deleted. Fill in the blanks with the help of the alternatives given. Select the most appropriate option for each number.

Modern football (1)_____in Britain in the 19th century. Since before medieval times, 'folk football' games had been played in towns and villages according to local customs and with a (2)_____of rules. Industrialisation and (3)_____, which reduced the amount of leisure time and space available to the working class, combined with a history of legal prohibitions against particularly (4)_____and destructive forms of folk football to undermine the game's status from the early 19th century onward. However, football was taken up as a winter game between residence houses at public (independent) schools such as Winchester, Charterhouse and Eton. Each school had its own rules; some allowed limited handling of the ball and others did not. The (5)_____in rules made it difficult for public schoolboys entering university to continue playing except with former schoolmates.

SubQuestion No : 24

Q.24 Select the most appropriate option to fill in blank no. 4.

- Ans 1. traces
 2. undercurrents
 3. calm
 4. violent

Question ID : 264330153433

Option 1 ID : 264330601258

Option 2 ID : 264330601256

Option 3 ID : 264330601255

Option 4 ID : 264330601257

Status : Answered

Chosen Option : 1

Comprehension:

In the following passage some words have been deleted. Fill in the blanks with the help of the alternatives given. Select the most appropriate option for each number.

Modern football (1)_____in Britain in the 19th century. Since before medieval times, 'folk football' games had been played in towns and villages according to local customs and with a (2)_____of rules. Industrialisation and (3)_____, which reduced the amount of leisure time and space available to the working class, combined with a history of legal prohibitions against particularly (4)_____and destructive forms of folk football to undermine the game's status from the early 19th century onward. However, football was taken up as a winter game between residence houses at public (independent) schools such as Winchester, Charterhouse and Eton. Each school had its own rules; some allowed limited handling of the ball and others did not. The (5)_____in rules made it difficult for public schoolboys entering university to continue playing except with former schoolmates.

SubQuestion No : 25

Q.25 Select the most appropriate option to fill in blank no. 5.

- Ans 1. grouse
 2. grunt
 3. variance
 4. control

Question ID : 264330153434

Option 1 ID : 264330601259

Option 2 ID : 264330601262

Option 3 ID : 264330601261

Option 4 ID : 264330601260

Status : Answered

Chosen Option : 4

